



Ultrasound & X-Ray CPT Codes

DX Skull & Face

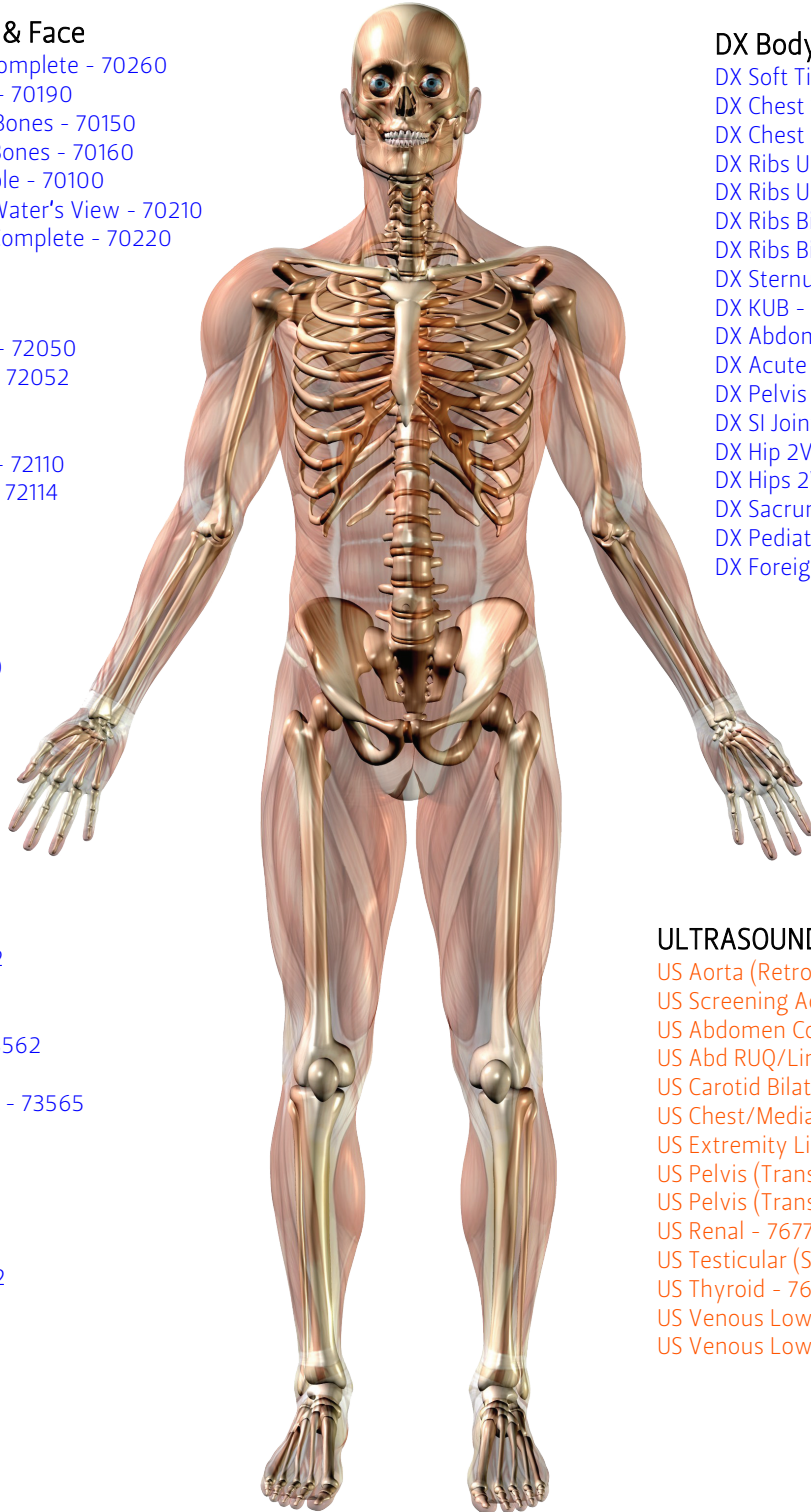
DX Skull Complete - 70260
DX Orbits - 70190
DX Facial Bones - 70150
DX Nasal Bones - 70160
DX Mandible - 70100
DX Sinus Water's View - 70210
DX Sinus Complete - 70220

DX Spine

DX C-Spine Comp 2-3V - 72040
DX C-Spine Comp w/ Obl or Flex/Ext - 72050
DX C-Spine Comp w/ Obl & Flex/Ext - 72052
DX T-Spine - 72070
DX L-Spine Comp 2-3V - 72100
DX L-Spine Comp w/ Obl or Flex/Ext - 72110
DX L-Spine Comp w/ Obl & Flex/Ext - 72114
DX Scoliosis 2V Standing - 72069

DX Extremity

DX AC Joints (Bilateral) - 73050
DX Clavicle 2V - 73000
DX Shoulder - 73030
DX Scapula 2V - 73010
DX Humerus 2V - 73060
DX Elbow 2V - 73070
DX Forearm 2V - 73090
DX Wrist 3V - 73110
DX Hand 3V - 73130
DX Fingers 3V - 73140
DX Infant Upper Ext 2V - 73092
DX Femur 2V - 73550
DX Knee 1-2V - 73560
DX Knee 3V (Sunrise View) - 73562
DX Knee 4+V - 73564
DX Bilateral AP Standing KneeS - 73565
DX Tib/Fib 2V - 73590
DX Ankle 3V - 73610
DX Foot 3V - 73630
DX Calcaneus 2V - 73650
DX Toes 3V - 73660
DX Infant Lower Ext 2V - 73592
DX Bone Age Study - 77072
DX Bone Survey - 77075
DX Joint Survey - 77077



DX Body

DX Soft Tissue Neck - 70360
DX Chest 1V - 71010
DX Chest PA & LAT - 71020
DX Ribs Unilateral - 71100
DX Ribs Unilateral & PA Chest - 71101
DX Ribs Bilateral - 71110
DX Ribs Bilateral & PA Chest - 71111
DX Sternum - 71120
DX KUB - 74000
DX Abdomen 2V (F & E) - 74020
DX Acute Abdomen Series - 74022
DX Pelvis 1-2V - 72170
DX SI Joints 3V - 72202
DX Hip 2V - 73510
DX Hips 2V Bil w/ AP Pelvis - 73520
DX Sacrum/Coccyx - 72220
DX Pediatric Pelvis/Hip(s) - 73540
DX Foreign Body 1V Child - 76010

ULTRASOUND

US Aorta (Retroperitoneal Ltd) - 76775
US Screening Aorta - G0389
US Abdomen Complete - 76700
US Abd RUQ/Limited - 76705
US Carotid Bilateral - 93880
US Chest/Mediastinum - 76604
US Extremity Limited NV - 76882
US Pelvis (Trans Abd) - 76856
US Pelvis (Transvaginal) - 76830
US Renal - 76770
US Testicular (Scrotum) - 76870
US Thyroid - 76536
US Venous Lower Bilateral - 93970
US Venous Lower Unilateral - 93971

Call 601-499-2010 to schedule an appointment.